

CARE AND MAINTENANCE

保養方法

- After using the torque wrench please remember to adjust the torque scale to the zero and store in the box.
- When the first-time to use this unit or longterm no use, please active springs or add lubricants first (please pre-press more than 20 times).
- The torque wrench is lubricated and should not be oiled. The only except is the ratchet head may be needed for smooth operation.
- The torque wrench is a precision measuring instrument. Calibration must be done regularly to ensure accuracy. Suggested calibration period is at least every year or even shorter depending on situation.
- Never disassemble the torque wrench by yourself. For any need to disassemble the torque wrench or repair it, please look for assistance form qualified service station.

- ◆ 使用後請將刻度降至最低點，以保持工具精準度並放回吹氣盒內歸位。
- ◆ 首次使用或久未使用，請先進行活絡彈簧或潤滑油(請預壓 20 次以上)
- ◆ 扭力扳手出廠時已有使用潤滑油以潤滑其零件，不應再自行上油。除非在長期使用後需要潤滑其頭部使其使用時更加滑順。
- ◆ 工業級扭力扳手是精密的儀器，建議至少每年校驗一次，以保持其精準度。如經常性使用則須不定期重新校驗。
- ◆ 請勿自行拆解工業級扭力扳手，如須拆解或維修請尋找專業的品質認證服務站進行協助。

Pro'sKit® ISO 9001 CERTIFIED

寶工實業股份有限公司
PROKIT'S INDUSTRIES CO., LTD.

<http://www.prokits.com.tw>

E-mail: pk@mail.prokits.com.tw

©2017 Prokit's Industries Co., LTD. All rights reserved 2017001(C)

STANDARD

標準

- We calibrate each torque wrench at the factory using torque standards according to DIN ISO 6789 & ASME B107.300-2010, and certifies it meets the accuracy requirements of specifications DIN ISO 6789 & ASME B107.300-2010.

- ◆ 測試標準根據 DIN ISO 6789 及 ASME B107.300.2010 來檢驗，以確保每支工業級扭力扳手的品質及精密度都符合上述國際標準之要求。

CONVERT FROM	TO	MULTIPLY BY
ozf-in	lbf-in	0.0625
lbf-in	ozf-in	16
lbf-in	kgf-cm	1.1519
lbf-in	lbf-ft	0.083333
lbf-in	kgf-m	0.011519
lbf-in	N-m	0.1130
lbf-in	dN-m	1.130
lbf-ft	N-m	1.356
lbf-ft	kgf-m	0.1382
lbf-ft	lbf-in	12
N-m	dN-m	10
N-m	kgf-cm	10.20
N-m	kgf-m	0.10197
N-m	lbf-in	8.8507
N-m	lbf-ft	0.73756
dN-m	lbf-in	0.885
dN-m	N-m	0.100
kgf-cm	lbf-in	0.8681
kgf-cm	N-m	0.09807
kgf-m	lbf-ft	7.233
kgf-m	N-m	9.807

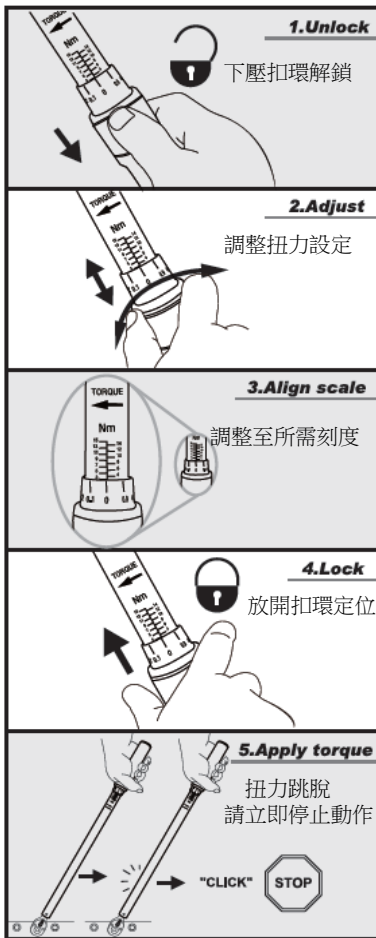
Pro'sKit®

TORQUE WRENCH INSTRUCTION MANUAL

工業級扭力扳手說明書



OPERATION 操作說明



SAFETY INSTRUCTIONS

重要安全指示



WARNING

RISK OF FLYING PARTICLES

- DO NOT USE TORQUE WRENCH FOR LOOSENING.
- DO NOT USE TORQUE WRENCH AS A HAMMER.
- PREVENT TORQUE WRENCH DROPPING FROM HIGH PLACE.
- NEVER USE TORQUE WRENCH TO BREAK LOOSE FASTENERS.
- USE OF DAMAGED HAND TOOLS, SOCKETS, EXTENSIONS AND ACCESSORIES MAY RESULT IN INJURY.
- TORQUE WRENCHES NOT IN CALIBRATION MAY CAUSE DAMAGE TO PARTS OR TORQUE WRENCH.
- DO NOT USE EXTENSIONS ON HANDLE AS DAMAGE TO TORQUE WRENCH WILL RESULT.
- MAKE SURE APPLY WITH A SLOW REGULAR FORCE WHEN PULLING UNTIL OVER TIGHTENING OF FASTENERS MAY RESULT IN BREAKAGE.



INJURY MAY RESULT FROM ELECTRICAL SHOCK

- HANDLE IS NOT INSULATED. DO NOT USE ON LIVE ELECTRICAL OR HIGH VOLTAGE CIRCUITS.



ALWAYS USE EYE PROTECTION WHILE USING HAND TOOLS



注意事項!

- ◆ 請勿將工業級扭力扳手當做拆卸工具。
- ◆ 請勿將工業級扭力扳手當成一般扳手或鐵鎚使用。
- ◆ 請避免扭力扳手從高處落下。
- ◆ 禁止將工業級扭力扳手用來敲打已斷裂的螺絲或螺帽等物件上。
- ◆ 請勿將已損壞的工具或配件使用在工業級扭力扳手上，以避免造成身體上的傷害。
- ◆ 請遵守標準的操作方式來使用工業級扭力扳手，以避免零件及扭力扳手損壞。
- ◆ 禁止在滾花握把上裝置延長桿等延伸(長)工具，以避免工業級扭力扳手損壞及使用者受到傷害。
- ◆ 操作時請平均施力，聽到“卡搭聲”即表示扭力到達，請勿再加以施力以避免造成螺絲(帽)及零件的損壞。



因滾花握把並非絕緣的材質，因此禁止在漏電及高壓電的環境中使用，以免造成觸電或受傷。



在使用工具時，敬請隨時配帶護目鏡。